

Trelleborg



# PS1000 Maximum uptime for your business

Trelleborg Tires products are engineered to enhance safety, stability, and performance across a wide range of applications. The PS1000 combines our Pit Stop Line technology with an optimized tread design to deliver outstanding quality and minimize downtime—crucial for seamless operations.



**REDUCES TOTAL COST  
OF OWNERSHIP**



**ENSURES  
FORKLIFT UPTIME**



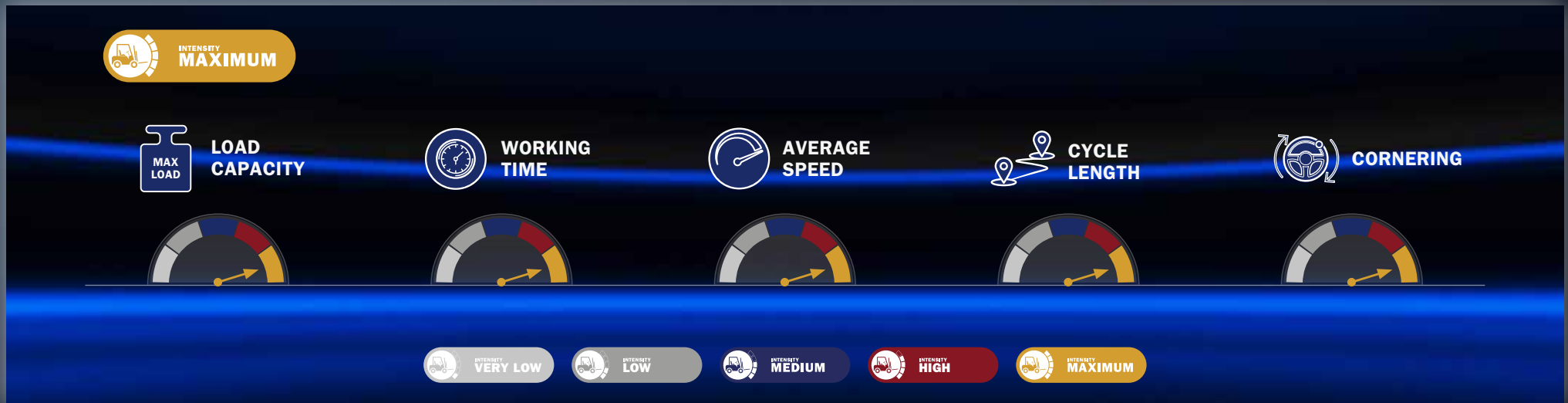
**ENHANCES  
TIRE SAFETY**



**REDUCES ENVIRONMENTAL  
IMPACT**

# Superior performance for maximum intensity applications

The PS1000 is the ideal choice for applications requiring maximum strength at maximum intensity. Top-level performance is guaranteed at high speeds, with heavy loads and prolonged daily use, always with excellent cornering control.



## Available compounds

MULTI PURPOSE	NON MARKING	ELECTRICALLY CONDUCTING	PRO HD	PRO TEX	PRO ENERGY	HEAT SHIELD	CHEMICAL RESISTANT	CUT RESISTANT
<b>Multipurpose:</b> Premium compound with excellent wear and rolling resistance.	<b>Non marking:</b> Premium white compound designed to keep floors free from tire marks. Excellent wear and rolling resistance. Exceptional heat dissipation.	<b>Electrically conducting:</b> Specialized black compound to enhance safety in flammable and explosive environments. This compound discharges electricity and avoids spark generation.	<b>ProHD:</b> Specialized compound for heavy duty applications. Provides higher load carrying capacity. Uptime at its best.	<b>ProTex:</b> Unique non-marking compound that features electrically conducting properties.	<b>ProEnergy:</b> Cool running compound specifically designed for operations running long distances at constantly high speeds. It also features lower battery consumption for electric forklifts.	<b>Heatshield:</b> Flame retardant super premium compound designed to withstand the high ambient temperatures.	<b>Chemical resistance:</b> Special tread compound with increased chemical resistance to solvents, oil and greasy environments.	<b>Cut resistance:</b> Specially designed to provide protection against cuts and abrasions leading to enhance productivity and efficiency.

# PS1000 Smooth & Traction tread patterns

**1 Unique concave sidewall shape:**  
excellent stability and comfort

**2 Extra deep wearable tread:**  
maximum service life

**3 Extra wide contact area:**  
outstanding wear resistance

**4 Specially designed cushion compound:**  
enhanced resistance to heat build-up

**5 Thermally efficient two stage construction compound:**  
reduced fuel consumption

**6 Very deep lug with radial sipes insertion:**  
superior traction in wet conditions



PS1000 Traction

PS1000 Smooth

# Pit Stop Line for absolute efficiency



The Pit Stop Line is an orange strip that appears approximately 100 hours before a tire needs to be replaced. It helps operators and fleet managers reduce the high safety risks of tire failure and schedule maintenance more efficiently, minimizing downtime and boosting overall performance, resulting in cost savings.

## Benefits

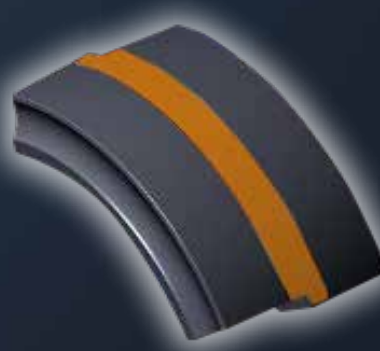
- **Value for money:** maximum tire usage
- **Uptime at the best:** minimize tire change
- **Effective planning:** plan 100 hours in advance the tire replacement
- **Enhanced safety:** no risk to change the tire too late
- **Reduce environmental impact:** use less, consume less, dispose less



NEW TIRE



WEARING TIRE



APPROX. 100 HOURS  
TIRE LIFE REMAINING



TWI (Tread wear indicator) is also reported on the tire to indicate the end of the tire life.

# Outstanding tire life, comfort and safety

The premium tread compound and tire design delivers outstanding performance in terms of tire life. The PS1000 lasts up to 23% longer than competitors tires available in the market, providing significant cost savings.

The cushion layer ensures excellent operator comfort and that heat build-up within the tire is controlled, preventing failures and increasing forklift uptime.

## Wear rate - Index *Higher is better*



## Heat build-up - Index *Lower is better*



# PS1000

MAXIMUM INTENSITY



Size	Metric Size	Tire type & Compound availability ▼ Smooth ♦ Traction																		Load Capacity [kg]				
		Multi Purpose		Non Marking		Electrically Conducting		ProHD		ProTEX		Heatshield		Chemical Resistant		Cut Resistant		Pro Energy		Other Vehicles			Counterbalanced Lift truck up to 25km/h	
																				@ 6 km/h	@ 10 km/h	@ 16 km/h	Load Wheel	Steering Wheel
10x4x6½	254x102x165	▼		▼		▼		▼		▼		▼		▼		▼		▼		780	640	555	565	465
10x5x6½	254x127x165	▼	♦	▼	♦	▼	♦	▼	♦	▼	♦	▼	♦	▼	♦	▼	♦	▼	♦	1.010	830	725	735	605
12x4½x8	305x114x203	▼	♦	▼	♦	▼	♦	▼	♦	▼	♦	▼	♦	▼	♦	▼	♦	▼	♦	1.045	860	745	760	620
13½x5½x8	343x140x203	▼	♦	▼	♦	▼	♦	▼	♦	▼	♦	▼	♦	▼	♦	▼	♦	▼	♦	1.510	1.240	1.080	1.095	895
14x4½x8	356x114x203	▼		▼		▼		▼		▼		▼		▼		▼		▼		1.170	960	830	850	695
14x5x10	356x127x254	▼		▼		▼		▼		▼		▼		▼		▼		▼		1.335	1.095	955	970	795
15x5x11¼	381x127x286	▼	♦	▼	♦	▼	♦	▼	♦	▼	♦	▼	♦	▼	♦	▼	♦	▼	♦	1.390	1.140	990	1.010	830
16x5x10½	406x127x267	▼	♦	▼	♦	▼	♦	▼	♦	▼	♦	▼	♦	▼	♦	▼	♦	▼	♦	1.510	1.240	1.080	1.095	895
16x6x10½	406x152x267	▼	♦	▼	♦	▼	♦	▼	♦	▼	♦	▼	♦	▼	♦	▼	♦	▼	♦	1.910	1.570	1.360	1.390	1.140
16x7x10½	406x178x267	▼		▼		▼		▼		▼		▼		▼		▼		▼		2.325	1.910	1.660	1.685	1.380
16¼x5x11¼	413x127x286	▼		▼		▼		▼		▼		▼		▼		▼		▼		1.530	1.250	1.090	1.105	905
16¼x6x11¼	413x152x286	▼	♦	▼	♦	▼	♦	▼	♦	▼	♦	▼	♦	▼	♦	▼	♦	▼	♦	1.920	1.580	1.370	1.395	1.140
16¼x7x11¼	413x178x286	▼		▼		▼		▼		▼		▼		▼		▼		▼		2.325	1.900	1.650	1.680	1.350
18x6x12½	457x152x308	▼	♦	▼	♦	▼	♦	▼	♦	▼	♦	▼	♦	▼	♦	▼	♦	▼	♦	2.100	1.720	1.500	1.525	1.250
18x7x12½	457x178x308	▼	♦	▼	♦	▼	♦	▼	♦	▼	♦	▼	♦	▼	♦	▼	♦	▼	♦	2.550	2.100	1.820	1.855	1.520
18x8x12½	457x203x308	▼		▼		▼		▼		▼		▼		▼		▼		▼		3.000	2.475	2.150	2.180	1.790
21x7x15	533x178x381	▼	♦	▼	♦	▼	♦	▼	♦	▼	♦	▼	♦	▼	♦	▼	♦	▼	♦	2.875	2.350	2.050	2.085	1.710
21x8x15	533x203x381	▼	♦	▼	♦	▼	♦	▼	♦	▼	♦	▼	♦	▼	♦	▼	♦	▼	♦	3.375	2.775	2.425	2.445	2.015
21x9x15	533x229x381	▼		▼		▼		▼		▼		▼		▼		▼		▼		3.900	3.200	2.775	2.830	2.320
22x8x16	559x203x406	▼		▼		▼		▼		▼		▼		▼		▼		▼		3.500	2.875	2.500	2.545	2.085
22x9x16	559x229x406	▼	♦	▼	♦	▼	♦	▼	♦	▼	♦	▼	♦	▼	♦	▼	♦	▼	♦	4.050	3.325	2.875	2.930	2.400
22x12x16	559x305x406	▼	♦	▼	♦	▼	♦	▼	♦	▼	♦	▼	♦	▼	♦	▼	♦	▼	♦	5.626	4.625	4.025	4.090	3.350
28x12x22	711x305x559	▼		▼		▼		▼		▼		▼		▼		▼		▼		6.740	5.540	4.820	4.900	4.015



Printed on  
recycled paper



Shop our tires online



Discover our website

Follow us



Yokohama TWS S.p.A.  
Via Nazionale Tiburtina, 143 - 00019 Villa Adriana - Tivoli (RM), Italy  
Phone: +39 0774 3841 – info.tws@yokohama-tws.com  
www.trelleborg-tires.com