



TRELLEBORG

Trelleborg



EMR1031 Superior performance for the toughest jobs

The new EMR1031, specially designed for wheel loaders, graders and articulated dump truck applications, is the optimal earthmover radial tire to take on every kind of loading operation.

Extremely versatile, it is made for the toughest work environments: infrastructure and building construction, landscaping, open pits and quarries. The right void ratio balance of its tread pattern delivers superior control and a tight grip when needed most, whether working on sandy, rocky or hard surfaces.



**RADIAL ALL-STEEL
CONSTRUCTION**



**REINFORCED
CARCASS**



**EXCELLENT
RIDE COMFORT**



**CUT RESISTANCE
COMPOUND**



1 Sidewall protector

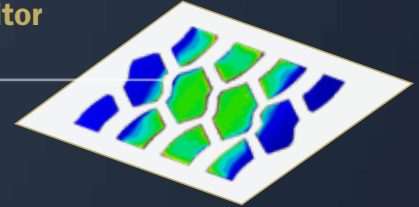
The premium sidewall protector prevents tire damage when working over rough ground, like rocky areas.



3 Wide tread contact area

The wide footprint area results in even wear, excellent stability and reduced vibration for operator comfort.

+7%
vs Premium Competitor



2 Cut-resistant compound

This high performing compound is up to 20% more resistant to cuts and wear compared to standard compounds. The tire lasts longer, reducing machine downtime, lowering cost per hour.



4 High tread depth

The deeper tread provides longer tire life and boosts the efficiency of your machine. The casing can also be retreaded, maximizing your investment in a sustainable way.



+10%
vs Premium Competitor

EMR1031

GRADER/LOADER SERVICE

Tire size	Tread pattern TRA	Rim size (Permitted)	Tread depth mm	Service description LI/SS Loader/Transport	Tire load capacity (kg) at 10 (km/h)	Tire pressure (bar)	Tire load capacity (kg) at 40 (km/h)	Tire pressure (bar)
17.5 R 25	L3/G3	14.00/1.5-25 (14.00/1.5x25 DC, 14.00/1.3x25 DC)	31	* 176 A2/153 A8	7.100	4,50	3.650	3,00
20.5 R 25	L3/G3	17.00/2.0-25 (17.00/1.7-25)	36	**/* 193 A2/161 A8	11.500	5,75	4.625	3,00
23.5 R 25	L3/G3	19.50/2.5-25	37	**/* 201 A2/170 A8	14.500	5,75	6.000	3,00

LOADER/TRANSPORT SERVICE

Tire size	Tread pattern TRA	Rim size (Permitted)	Tread depth mm	Service description LI/SS Loader/Transport	Tire load capacity (kg) at 10 (km/h)	Tire pressure (bar)	Tire load capacity (kg) at 50 (km/h)	Tire pressure (bar)
26.5 R 25	L3/E3	22.00/3.0-25	45	** 209 A2/193 B	18.500	5,75	11.500	4,5
29.5 R 25	L3/E3	25.00/3.5-25	47	** 216 A2/200 B	22.400	5,75	14.000	4,5

*/** - Index of tyre strength



Shop our tires online



Discover our website

Follow us

