



Trelleborg

Light service tires



Tires for light service



Designed for a variety of demanding applications, including farming, industry, turf, snow, and high-speed service, our light service tires are ideal for rims up to 15 inches in diameter.

Trelleborg Tires offers one of the world's most extensive ranges of tires in this segment, which, combined with our wide selection of wheels, provides complete wheel solutions that deliver exceptional quality and design.



VERSATILITY



**SOIL
PROTECTION**



**PUNCTURE
RESISTANCE**



**REDUCED
FUEL CONSUMPTION**

DRIVER

Green area tire for professional use.

GARDENER

Green area tire for hobby machines.

T49

High Speed tire with high shoulder profile.

T63

Farming tire with traction pattern.

T94

Industry tire with combined pattern.

T310

Farming tire increasing efficiency during working operations due to its optimized groove depth and a smoother shape.

T411

Combined pattern for green area and farming.

T412

Combined pattern for green area and farming.

T413

Combined pattern for green area and farming.

T415

Tire for small compact machines used for digging, drilling and loading.

T421

Farming tire for ploughing and for mini loader.

T430

Tire for agriculture and green areas with rounded shoulder profile for small dumpers and mini loaders.

T446

Farming tire with easy rolling pattern.

T448

Farming tire with extra strong tread and easy rolling pattern.

T462

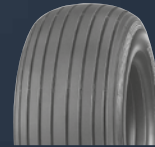
Farming tire with traction pattern.

T463

Combined tire for farming and green area.

T501

High Speed tire with easy rolling pattern.

T510

Farming tire with easy rolling pattern.

T513

Farming tire with extra good sidewall stability.

T521

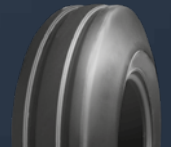
Smooth pattern tire for green area.

T522

Industry, farming and green area tire with smooth pattern.

T523

High Speed or industry tire with high shoulder.

T528

Tire especially made for snow machines.

T530

Industry tire with good grip and low roll resistance.

T533

High Speed tire with combined pattern.

T536

Farming tire with combined pattern.

T537

Combined tire for green area, farming and industry.

T539

Combined tire for green area, farming, industry or high speed service.

T550

Skid Steer tire with good grip and comfort.

T559 Turf Grip

Combined tire for green area, farming and industry.

T560 ICE

For detachable chairlifts. Designed to perfectly work at very low temperature.

T570

Skid Steer tire with good grip and comfort and long lifespan.

T690

High Speed tire with high shoulder.

T991

Industry and farming tire with rounded shoulder.

HIGH GRIP

Tire for green areas with good grip.

TRACTION HAYRACKER

Farming tire with good grip.



Green area tire for professional haymaking machinery with high stubble resistance.

Technical specifications

TIRES 4"

SIZE	PR/LI	TREAD PATTERN	MAIN RANGE OF USE	RIM	PERMITTED RIMS	OD mm +/-1,5%	SW mm +/-2%	MAX. AIR PRESSURE bar	MAX. LOAD kg	SPEED (km/h)	RC mm +/-2,5%
3.00-4	4	T991	Farming	2.10	2.5	260	88	3,5	105	30	772
	6	T991	Farming	2.10	2.5	260	88	5,0	135	30	772
4.00-4	6	T530	Industrial	2.10	2.5	252	83	6,0	200	25	751
	6	T991	Farming	2.50C	3.00	312	113	4,25	190	30	927
4.10-4	4	T510	Farming	2.10C	3.25A	276	104	2,8	165	30	820
4.10/3.50-4	6	T539	Industrial	2.10		272	89	6,9	210	25	808
11x4.00-4	2	T537S TL	Green Area	2.75A	3.25A	262	101	1,5	100	25	778
100/100-4	60A8/48A8	T539	Industrial	2.5		304	98	6,0	250	40	908

TIRES 6"

SIZE	PR/LI	TREAD PATTERN	MAIN RANGE OF USE	RIM	PERMITTED RIMS	OD mm +/-1,5%	SW mm +/-2%	MAX. AIR PRESSURE bar	MAX. LOAD kg	SPEED (km/h)	RC mm +/-2,5%
3.50-6	4	T510	Farming	2.50A	2.50C	341	100	3,0	165	30	1013
4.00-6	6	T991	Farming	2.50A		358	108	4,3	250	30	1063
4.10/3.50-6	57J	T533 HS	High Speed	2.50A-6		320	94	4,5	230	100	950
13x5.00-6	2	GARDENER	Green Area	3.50		325	120	1,4	132	30	962
	4	T539 TL	Green Area	3.50A		322	117	2,8	200	30	956
	6	T539 TL	Industrial	3.50A		320	122	4,1	250	30	989
	4	T510 TL	Farming	3.50A		326	119	2,8	200	30	968
15x6.00-6	6	T510	Farming	3.50A		326	119	4,1	250	30	955
	2	GARDENER TL	Green Area	4.50		363	163	1,0	165	30	1070
	4	T539 Grip TL	Green Area/Farming	4.50A-6		370	161	2,1	257	30	1099
100/65-6	24A8	4	T510 TL	Farming	4.50A-6	368	160	2,1	257	30	1093
		6	T510 TT	Farming	4.50A-6	366	162	3,8	335	30	1087
100/85-6	46	T539 Grip TL	Green Area	3.00A		286	96	1,6	90	40	835
140-6	46	T513	Farming	2.50A-6	2.50C-6	325	105	2,8	165	30	1004
	6	T539	Farming	4.50A		328	137	4,3	260	30	974
	10	T510	Industrial	4.50A		340	143	9,5	780	25	1004

TIRES 8"

SIZE	PR/LI	TREAD PATTERN	MAIN RANGE OF USE	RIM	PERMITTED RIMS	OD mm +/-1,5%	SW mm +/-2%	MAX. AIR PRESSURE bar	MAX. LOAD kg	SPEED (km/h)	RC mm +/-2,5%	
3.00-8	2	T539 Grey	Industrial	2.50A	2.10	358	86	2,4	140	25	1063	
3.50-8	4	T510	Farming	2.50A	2.10	392	101	2,8	190	30	1164	
	4	T513	Farming	2.50A	2.10	399	98	2,8	190	30	1185	
4.00-8	56J	T501 HS	High Speed	2.50A-8	2.1-8	500	255	4,3	224	100	1167	
	4	T63 TL	Farming	2.50A	3.00	427	106	2,8	225	30	1277	
	4	T510	Farming	2.50A	3.00	425	114	2,8	225	30	1236	
	4	T513	Farming	2.50A	3.00	426	107	2,8	225	30	1271	
	6	T991	Farming	2.50A	3.00	416	105	4,3	290	30	1233	
	6	T522	Farming	2.50A	3.00	430	110	4,3	290	30	1265	
5.00-8	8	T523	Industrial	2.50	3.00/3.75	418	123	9,0	670	25	1240	
	71J	T49 HS	High Speed	2.50A-8	3.00-8	423	121	6,3	345	100	1241	
	6	T522	Farming	3.00		450	130	3,6	387	30	1337	
	16x6.50-8	4	T539 Grip TL	Green Area	5.375I	5.50A	406	166	1,9	280	30	1206
		6	T539	Farming	5.375I-8	5.50A-8	410	174	3,0	365	30	1218
73		T510	Green Area/Farming	5.375I	5.50A	413	173	3,0	325	40	1221	
73		Hayracker	Green Area/Farming	5.375I	5.50A	413	173	3,0	325	40	1221	
73A8		T310	Farming	5.375I	5.50A	413	173	3,0	325	40	1221	
16.5x6.50-8	84A8/80B	T510	Green Area	5.375I	5.50A	406	172	5,1	500	40	1221	
	2/49A6	GARDENER TL	Green Area	5.375		414	168	1,0	185	30	1221	
	84	T310	Farming	5.375I	5.50A	406	172	5,1	500	40,5	1221	
	64J	T539 HS	High Speed	5.375-8	5.50A-8	411	165	3,1	280	100	1224	
	72J	T539 HSTL	High Speed	5.375I	5.50A	408	172	4,8	365	100	1212	
16x7.50-8	4	T537 TL	Green Area	5.375	5.50A	430	180	2,1	335	30	1265	
	4/70A6	T539 TL	Green Area	5.375I	5.00A	420	179	1,8	335	30	1240	
18x7.50-8	2	T539 TL	Green Area/Farming	5.50	6.00	464	184	0,9	243	30	1372	
18x8.50-8	2/58A6	GARDENER TL	Green Area	7.00		455	214	0,7	236	30	1350	
	4	T539 TL	Green Area/Farming	7.00I	6.50	472	222	1,5	375	30	1402	
	6	T539	Farming	7.00I	6.50	466	222	2,8	475	30	1384	
	6	T510	Farming	7.00I	6.50	463	225	2,8	475	30	1384	
	8	T415	Industrial	7.00I-8	6.50-8	450	213	3,2	580	30	1347	
18x9.50-8	8	T570 TL	Skid Steer	7.00I		450	213	3,2	580	15		
	4	T521 GT TL	Green Area	7.00I		455	240	1,7	470	25	1348	
	4/82A6	DRIVER TL	Professional	7.00		465	235	1,7	475	30	1347	
20x8.00-8	4	T539 TL	Green Area	6.00		515	215	1,5	420	30	1517	
20x10.00-8	2	GARDENER	Green Area	7.00		500	255	0,7	345	30	1463	
	6	T539	Farming	8.50	8.00	529	264	2,4	670	30	1556	
170/60-8	47A8/35A8	HIGH GRIP TL	Green Area	5.375		407	171	1,2	175	40	1195	
190-8	88A6	T537	Industrial	5.50	6.00	424	175	5,9	560	30	1265	
200/65-8	59A8/47A8	HIGH GRIP TL	Green Area	5.375	6.50	455	205	1,2	243	40	1360	
210/60-8	83A8	T415 TL	Industrial	7.00	6.50	455	212	3,2	487	40	1347	
220/45-8	70A8/58A8	T510	Farming	7.00I-8		410	220	2,4	335	40	1195	
	70A8/58A8	T310	Farming	7.00I-8		410	220	2,4	335	40	1195	
220/60-8	74A8/62A8	T463 Plus	Farming	7.00I-8	8.00-8	476	220	2,0	375	40	1392	
	83	T510	Farming	7.00I		464	222	2,8	487	40	1382	

TIRES 9”

SIZE	PR/LI	TREAD PATTERN	MAIN RANGE OF USE	RIM	PERMITTED RIMS	OD mm +/-1,5%	SW mm +/-2%	MAX. AIR PRESSURE bar	MAX. LOAD kg	SPEED (km/h)	RC mm +/-2,5%
6.00-9	6	T522	Farming	4.50	4.00E	560	174	3,0	500	30	1665
	10	T522	Farming	4.00E-9	4.50-9	564	164	5,0	670	30	1675
	10	T991	Farming	4.00E	4.50	542	182	5,0	670	30	1610
	99J	T523 HS	High Speed	4.00E	4.50	562	170	8,5	775	100	1669

TIRES 10”

SIZE	PR/LI	TREAD PATTERN	MAIN RANGE OF USE	RIM	PERMITTED RIMS	OD mm +/-1,5%	SW mm +/-2%	MAX. AIR PRESSURE bar	MAX. LOAD kg	SPEED (km/h)	RC mm +/-2,5%
4.40-10	62J	T690 HS	High Speed	3.50		476	118	3,5	265	100	1414
5.0-10	8	T462 TL	Farming	4.00	3.50	537	144	5,2	670	30	1571
7.50-10	12	T991	Farming	5.50F-10	6.00F-10	670	224	5,0	1075	30	1990
	14	T523 TL	Industrial	5.50F		668	225	9,0	2180	25	1984
18x8.50-10	8	T570 TL	Skid Steer	7.00I		468	204	3,2	545	15	1391
20x8.00-10	4	T539 GT TL	Green Area	6.00I	7.00	512	204	1,7	412	30	1521
	6	T539 TL	Farming	6.00I		505	204	2,9	585	30	1500
	8	T570 TL	Skid Steer	6.00I		505	208	2,8	615	15	1532
20.5x8.00-10	10	T539 TL	Farming	7.00		525	208	4,0	825	30	1573
20x10.00-10	6	T539 TL	Farming	7.00	8.50	512	242	2,4	650	30	1533
110/100-10	84A8/72A8	T560 ICE TL	Ropeway	3.00B		474	110	5,0	500	40	1420
200/55-10	95A8	T430 TL	Farming	6.00	5.50/7.00	487	190	4,0	690	40	1448
250/50-10	79A8/67A8	HIGH GRIP TL	Green Area	8.50		504	251	1,2	437	40	1515

TIRES 12”

SIZE	PR/LI	TREAD PATTERN	MAIN RANGE OF USE	RIM	PERMITTED RIMS	OD mm +/-1,5%	SW mm +/-2%	MAX. AIR PRESSURE bar	MAX. LOAD kg	SPEED (km/h)	RC mm +/-2,5%
6-12	4	T63 TL	Farming	4.00E	5.00	582	146	2,75	230	30	1729
10.0/75-12	10	T446 TL	Farming	9.00	7.00	690	255	3,9	1325	30	2049
23x8.50-12	4	T463 TL	Farming	7.00	7JA	570	213	1,8	500	30	1699
	104	T463 TL	Farming	7.00	7JA-12	572		4,0	900	40	1718
	6	T550 TL	Skid Steer	7.00I	7JA	589	211	3,4	820	10	1752
	10	T539	Farming	7.00I	7JA	568	212	4,0	900	30	1687
	10	T539 Grey	Scissor Lift	7.00		580	220	4,0	900	30	1758
	23x10.50-12	4	T463 TL	Farming	8.5	7JA	572	275	1,4	600	30
	10	T463 TL	Farming	7.00I	8.50I	574	272	3,6	1000	30	1705
	4	T539 TL	Green Area/Farming	7.00I	8.50I	580	269	1,4	550	30	1723
	6	T539 TL	Farming	7.00	8.50	571	247	2,2	800	30	1699
	6	T539 Grey TL	Industrial	7.00	8.50	571	247	2,2	800	30	1699
23x12.50-12	6/100A6	DRIVER TL	Green Area	7.00	8.50	580	238	2,2	800	30	1720
	6	T539 TL	Industrial	10	10.50I	584	317	2,1	925	30	1734
26x12.00-12	4	T411 TL	Green Area/Farming	10.50I-12	9.50JA-12	646	318	1,4	800	30	1919
	8	T539 TL	Farming	10.50I	9.50JA	652	320	2,7	1150	30	1936
	8	T539 TT	Farming	10.50I-12	9.50JA-12	652	320	2,7	1150	30	1936
	8	T463 TL	Farming	10.50I	9.50JA	654	318	2,7	1150	30	1942
220/60-12 (23x8.50-12)	88A8/76A8	T539 Soft Grip TL	Green Area	7.00I	7JA	578	224	2,0	560	40	1736

TIRES 12”

SIZE	PR/LI	TREAD PATTERN	MAIN RANGE OF USE	RIM	PERMITTED RIMS	OD mm +/-1,5%	SW mm +/-2%	MAX. AIR PRESSURE bar	MAX. LOAD kg	SPEED (km/h)	RC mm +/-2,5%
300/65-12	118A8	T446 TL	Farming	9.00		687	303	2,6	1250	30	2040
320/60-12	132A8	T421 TT/TL	Farming	10.50I		689	320	4,0	2000	40	2049
	132A8	T421 Grey TL	Industrial	10.50I		689	320	4,0	2000	40	2049
560x140-12	100	T528	Snow Groomer	3.00B-12		556	143	8,0	800	20	1705

TIRES 13”

SIZE	PR/LI	TREAD PATTERN	MAIN RANGE OF USE	RIM	PERMITTED RIMS	OD mm +/-1,5%	SW mm +/-2%	MAX. AIR PRESSURE bar	MAX. LOAD kg	SPEED (km/h)	RC mm +/-2,5%
23x5(23x5.00-13)	10	T94 TL	Industrial	4.50	3.75	635	155	8,5	1500	25	1913
610x145-13	112	T528	Snow Groomer	4.00		609	150	7,5	1120	20	1856

TIRES 14”

SIZE	PR/LI	TREAD PATTERN	MAIN RANGE OF USE	RIM	PERMITTED RIMS	OD mm +/-1,5%	SW mm +/-2%	MAX. AIR PRESSURE bar	MAX. LOAD kg	SPEED (km/h)	RC mm +/-2,5%
645x160-14	120	T528	Snow Groomer	4JA-14		645	160	7,0	1400	20	1953

TIRES 14.5”

SIZE	PR/LI	TREAD PATTERN	MAIN RANGE OF USE	RIM	PERMITTED RIMS	OD mm +/-1,5%	SW mm +/-2%	MAX. AIR PRESSURE bar	MAX. LOAD kg	SPEED (km/h)	RC mm +/-2,5%
200/60-14.5	10	T448 Extra TT/TL	Farming	6.75	8.00	620	206	5,0	950	30	1841
	10	T536	Farming	6.75	8.00	628	204	5,0	950	30	1865

TIRES 15”

SIZE	PR/LI	TREAD PATTERN	MAIN RANGE OF USE	RIM	PERMITTED RIMS	OD mm +/-1,5%	SW mm +/-2%	MAX. AIR PRESSURE bar	MAX. LOAD kg	SPEED (km/h)	RC mm +/-2,5%
7.00-15	6	TRACTION	Farming	4.50		730	175	2,5	1150	30	2140
11L-15	12/121A8	T510 TL	Farming	W8		777	285	3,6	1450	40	
29x12.50-15	4	T411	Green Area/Farming	10		743	308	1,3	600	50	2207
	90	T463	Green Area/Farming	10	10LB - 9.00	735	315	1,4	600	50	2200
29x13.50-15	4	T411	Green Area/Farming	10		731	334	1,4	600	50	2171
31x15.50-15	8	T412 TL	Farming	13		818	402	3,1	1250	50	2429
33x12.50-15	6	T413 TL	Green Area/Farming	10		846	320	1,9	1215	50	2513
33x15.50-15	6	T412 TL	Green Area/Farming	13		842	395	1,5	1250	50	2501
	8	T412 TL	Farming	13		842	395	2,0	1600	50	2501
320/55-15	123A8	T559 Turf Grip TL	Green Area/Farming	10LB	9.00	730	320	2,8	1550	40	2190
	133A8/121A8	T421 TL	Industrial	10LB	9.00	735	315	4,0	2060	40	2200
320/70-15	122	T539 SOFT GRIP	Industrial	10LB		835	340	2,0	1500		2550
380/60-15	114A8	T539 Soft Grip TL	Green Area	10.00	12.00	829	375	1,2	1180	40	2440
400/50-15	135A8	T463 TL	Farming	13LB		795	400	3,2	2180	40	2351
690x180-15	100A8	TRACTION	Farming	4.50E		685	179	3,3	800	40	2034

T404 Cross-ply tires Twin Garden

Engineered for delicate terrains like grass, the Twin Garden tire is designed to minimize soil compaction and track formation. The soft carcass, the thoughtful tread pattern, and the low ground pressure, ensure optimal performance on both soft and hard surfaces.



17.5"

SIZE	New tire		Tire in service		SLR mm	RC mm	RIM	TYPE	SPEED (km/h)	MAX. AIR PRESSURE bar	MAX. LOAD kg
	SW mm	OD mm	SW max mm	OD max mm							
400/55-17.5 108A8	400	870	420	892	410	2640	AG11.75	TL	50	1,2	900
									40	1,2	1000
									25	1,2	1190
									10	1,4	1400

Subject to availability

22.5"

SIZE	New tire		Tire in service		SLR mm	RC mm	RIM	TYPE	SPEED (km/h)	MAX. AIR PRESSURE bar	MAX. LOAD kg
	SW mm	OD mm	SW max mm	OD max mm							
400/55-22.5 111A8	400	1000	420	1021	455	3000	AG11.75	TL	50	1,2	985
									40	1,2	1090
									25	1,2	1300
									10	1,4	1530

30.5"

SIZE	New tire		Tire in service		SLR mm	RC mm	RIM	TYPE	SPEED (km/h)	MAX. AIR PRESSURE bar	MAX. LOAD kg
	SW mm	OD mm	SW max mm	OD max mm							
600/60-30.5 142A8	600	1500	630	1536	668	4380	AG20.00	TL	50	1,2	2385
									40	1,2	2650
									25	1,2	3155
									10	1,4	3710

Load data in the table is valid for one tire only.
Reference speed, load and inflation pressure are shown in **bold**.

TL = Tubeless. Tubes are not suitable for use in Garden Tractor tires.

Tires for gentle service on green areas.

25 = 25 km/h refers to service on green areas on road.
40 = 40 km/h refers to service on road only.

Wheels and rims for light service tires

Trelleborg offers a diverse range of wheels and rims, customizable from 3 to 16 inches to meet specific application needs and load capacity requirements. These products are available in various configurations, paint colours, and special features (e.g. hubs and bearings), ensuring optimal performance and adaptability.

Product range

DIAMETER [inches]	RIM SIZE	DISC THICKNESS [mm]	WELDED WHEEL	BOLTED WHEEL	WHEEL WITH INTEGRATED HUB	WHEEL WITH CENTER BORE
3	1.50-3	4		•	•	
	2.10-4	4/5		•	•	
4	2.10X4	2/3	•		•	
	2.50C-4	6		•	•	
	2.75AX4	3	•		•	
	6.35-4	5		•	•	
5	3.00AX5	3	•		•	
	2.50AX6	4	•		•	
6	2.50AX6	4	•			•
	2.50A-6	4		•		•
	3.00AX6	3	•		•	
	3.25A-6	6		•		•
	3.50A-6	6	•		•	
	3.50AX6	4	•			•
	4.50A-6	6		•	•	
	4.50AX6	4	•		•	
	4.50AX6	4	•		•	•
	7.00AX6	4	•		•	
8	2.125-8	4		•		•
	2.125-8	4		•	•	
	2.50AX8	3/4	•		•	
	2.50AX8	4/6	•			•
	2.50C-8	8		•		•
	2.50CX8	4	•			•
	2.50CX8	4	•		•	
	2.50X8	2/3	•		•	
	2.50X8	3	•			•
	3.00D-8	6		•	•	
	3.00D-8	5/6/8/9/10		•	•	•
	3.00DX8	4/5	•		•	
	3.00DX8	4/5	•			•
	3.75I-8	6/8/9/10		•		•
	4.25I-8	10		•		•
	4.33R-8	8/10/12		•	•	•
	4.375AX8	4	•		•	
	4.375AX8	4	•			•
	5.00X8	4/5	•			•
	5.375-8	4		•	•	
5.375IX8	4/5	•		•		
5.375IX8	4/5	•			•	
5.50AX8	4/5	•		•		
5.50AX8	4/5	•			•	
5.50I-8	6		•		•	
5.70AX8	4	•			•	
7.00IX8	4/5	•		•		
7.00IX8	6	•			•	
8.50IX8	5	•		•		
8.50IX8	5	•			•	

DIAMETER [inches]	RIM SIZE	DISC THICKNESS [mm]	WELDED WHEEL	BOLTED WHEEL	WHEEL WITH INTEGRATED HUB	WHEEL WITH CENTER BORE
9	4.00E-9	8		•	•	
	4.00E-9	8/9/10/12		•		•
	4.00EX9	5/6/8	•		•	
	4.00EX9	5/6	•			•
	6.00E-9	9		•		•
10	3.50-10	5		•		•
	3.50BX10	5/6	•			•
	3.50X10	5	•		•	
	3.50X10	5/6	•			•
	5.00F-10	9/10/12		•		•
	5.00IX10	7/8	•			•
	5.50F-10	8/10/12		•		•
	6.00F-10	12		•		•
	6.00IX10	5/6	•		•	
	6.00IX10	5/6	•			•
	6.75IX10	6	•			•
	7.00IX10	6/8	•			•
	8.25IX10	7/8	•			•
	8.50IX10	6/8	•			•
	9.00IX10	8	•			•
12	3.00DX12	5	•		•	
	3.00DX12	6	•			•
	3.165-12	12		•		•
	4.00X12	5	•		•	
	4.00X12	5	•			•
	4.25X12	6	•		•	
	4.25X12	6	•			•
	5.00S-12	12		•		•
	7.00I-12	6		•		•
	7.00IX12	6/8	•			•
	7.00IX12	6/8	•		•	
9.00X12	8	•		•		
13	4.50JX13	6	•			•
14	5.50KX14	5	•		•	
	5.50KX14	6	•			•
14.5	6.75X14.5	6/8	•		•	
	6.75X14.5	6/8	•			•
15	3.00DX15	5	•			•
	3.50DX15	6	•			•
	4.00EX15	5	•		•	
	4.50EX15	5	•		•	
	4.50EX15	6	•			•
	4.50JX15	6	•		•	
16	9.00X15	6	•		•	
	4.00EX16	6	•			•
	9.00EX16	6	•		•	

Twin Garden

DIAMETER [inches]	RIM SIZE	DISC THICKNESS [mm]	WELDED WHEEL	BOLTED WHEEL	WHEEL WITH INTEGRATED HUB	WHEEL WITH CENTER BORE
17.5	AG11.75X17.5					•
22.5	AG11.75X22.5					•
30.5	AG20.00X30.5					•

Technical information about rims and wheels

Size

The first figure specified for a rim or wheel indicates its width in inches. The last figure indicates the rim diameter in inches. The letter after the first figure indicates the contour of the rim or wheel. The symbol after the letter indicates whether it has been bolted or welded.

5.00Ax8

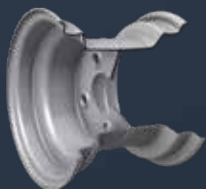
The first number indicates the rim width in inches

The letter (if present) specifies the rim profile

The symbol (x or -) shows whether the wheel has a bolted (x) or welded (-) design

The last number represents the rim diameter in inches

Available designs



Welded wheels

Two rim halves, symmetrical or asymmetrical, welded together.



Bolted wheels

Two symmetrical rim halves bolted together.



Wheel with integrated hub

Drop-centered rim or two half bare rims, welded or bolted together, and a central integrated hub.



Wheel with center bore

Drop-centered rim or two half bare rims, welded or bolted together, and a disc with a central bore.



Shop our tires online



Discover our website

Follow us

